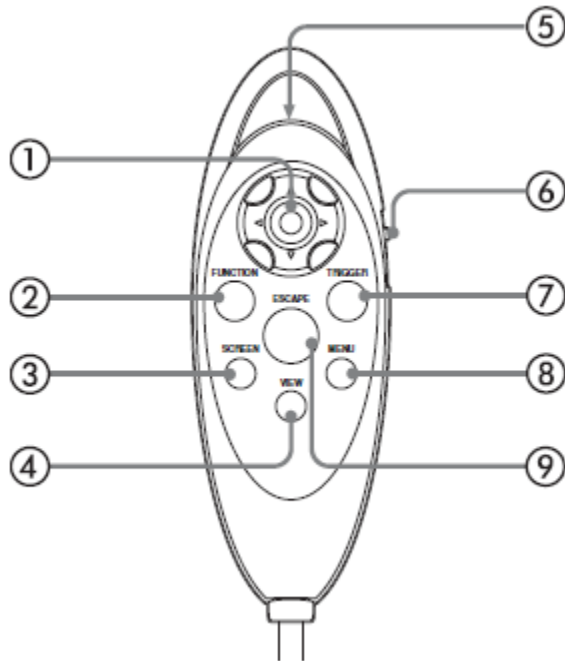


## Registering an image with the XG-7000

The Keyence XG vision system can be controlled using a handheld pendent – shown below along with explanations of each button:



### ① [ENTER] (0) button

Move the [ENTER] button up, down, right or left to move the selected item on the screen. Press the button to confirm the setting on the screen.

### ② [FUNCTION] (1) button

Press the center button to display the function menu (page 5-7).

### ③ [SCREEN] (4) button

Press this button to toggle through the display templates in order (page 5-5). For example, pressing the button switches from the Raw screen to the Filtered screen 1, then to Filtered screen 2, etc.

### ④ [VIEW] (5) button

Press to display the View Bar, zoom in or out on the screen, or to switch between options such as result values or display templates (page 3-10, 5-3).

### ⑤ Back (7) button

Various operations can be performed by using this in combination with other keys (next page).

### ⑥ Selector switch (8) (PROG/RUN)

Use this switch to change between Run mode and Program mode. Pressing this switch toggles between the two modes.

### ⑦ [TRIGGER] (3) button

Press the button to enter a trigger input and capture an image.

### ⑧ [MENU] (6) button

Press this button to switch between help displays on the bottom of the screen.

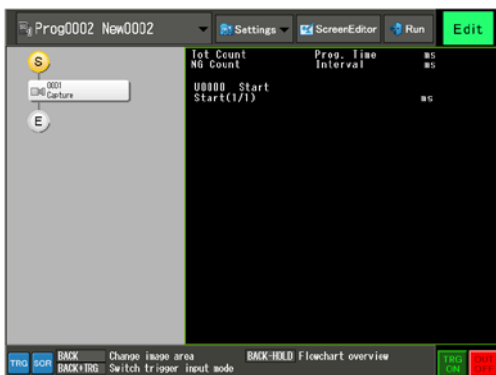
### ⑨ [ESCAPE] (2) button

Press this button to return to the previous screen or to resume the previous operation.

The first step in programming the vision system is to register an image. This registered image is used as an image template to initially program the inspection tools.

This portion will outline the steps to register an image using the pendent. The vision system can operate in one of two modes – use the pendent to toggle between these two modes (bottom # 6):

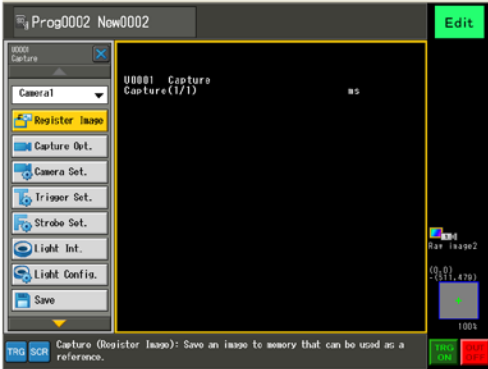
### Program Mode



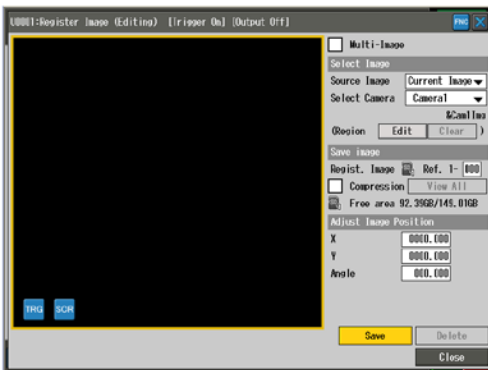
### Run Mode



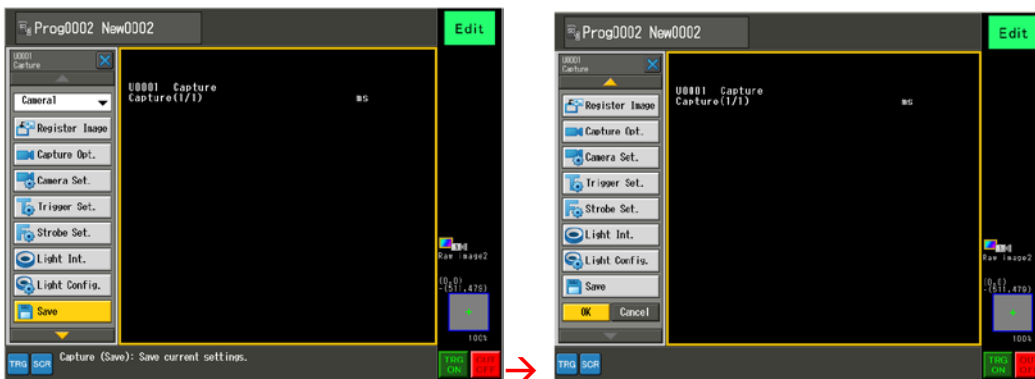
1. Go to Edit Mode – select the Capture Unit 001 and hit Enter:



2. Go to Register Image and hit Enter:



3. Push and hold the Trigger button (button # 7) for about 2 seconds. At this point, a live image will appear. Adjust the lens as necessary (aperture and focus) in order to acquire a good image.
4. Once the desired image is in view save the image by selecting **Save** (located in the lower right-hand side of the screen).
5. Hit Close when finished to return to the main menu.



6. Go down to Save and hit Enter to save your settings and OK to return the program flowchart.